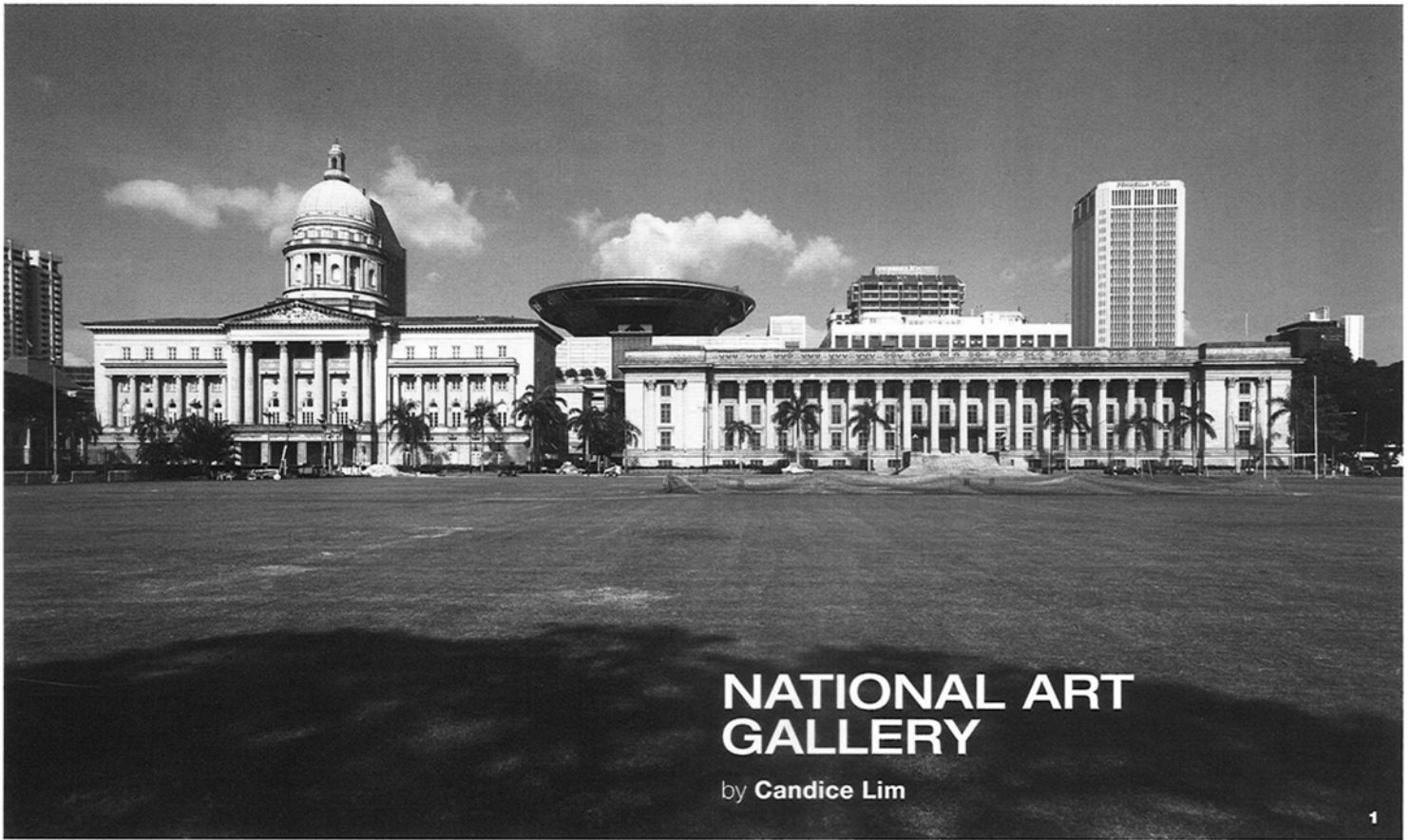


SINGAPORE



NATIONAL ART GALLERY

by **Candice Lim**

1

Museums and art galleries are places that ‘feed the soul’ by the nature of their programmes; they are spaces where art can be appreciated, and where people are emotionally and intellectually stimulated to feel delight and wonder or provoked into critical thinking and dialogue.

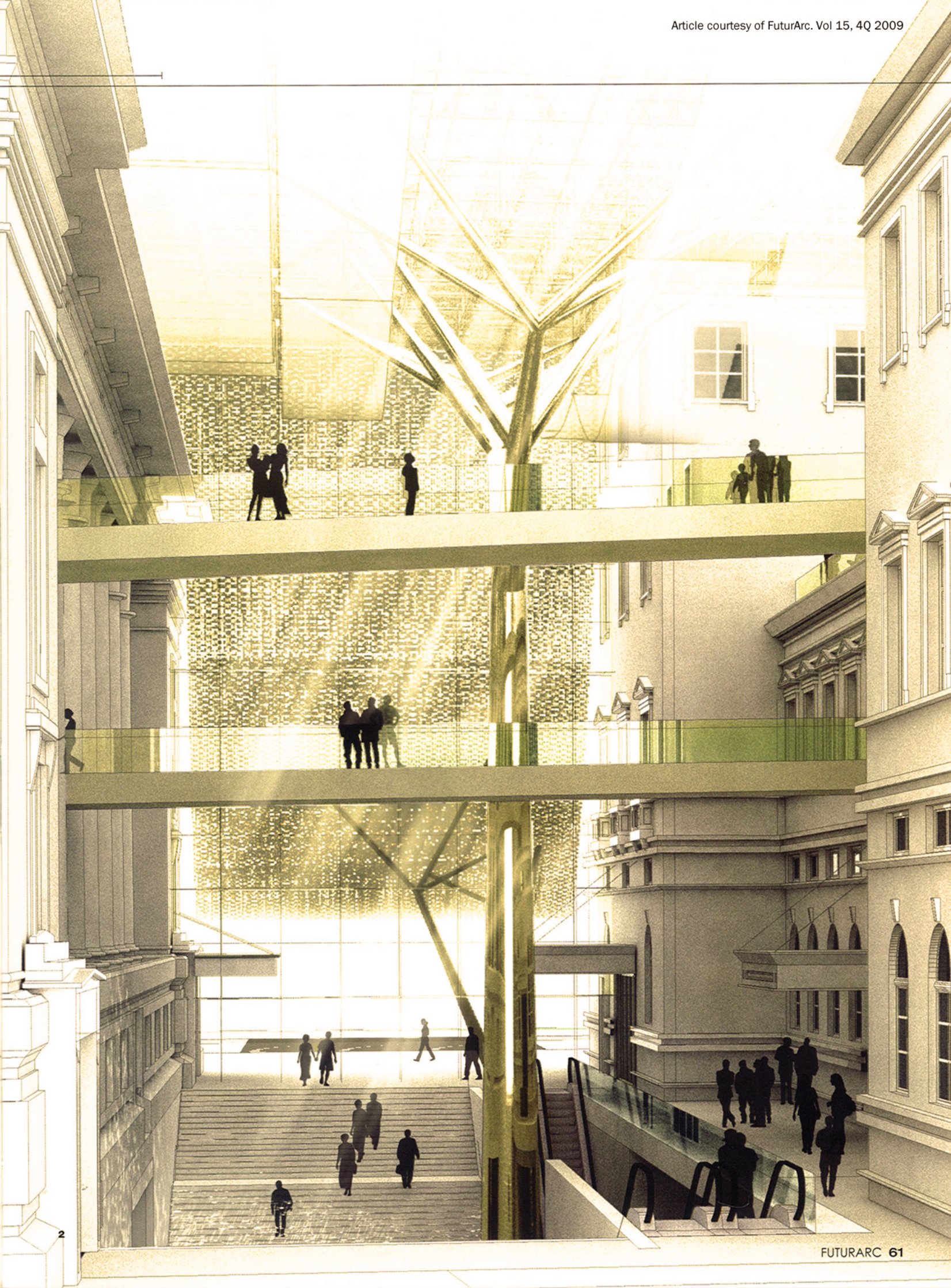
In context, how such spaces are designed then becomes an important factor because it affects how the art pieces/installations/exhibits are displayed and appreciated. On the physical/spatial level, obviously it must allow for the exhibition and display of art of various scales and sizes in a non-restrictive way; and there must be enough room for the smooth flow of human traffic. On the emotional/‘feeling’ level, museums and galleries should come across as pleasant and comfortable, conducive for reflection and contemplation. The appropriate lighting conditions, temperature, ambience and so on, thus become vital factors in influencing the whole gallery experience.

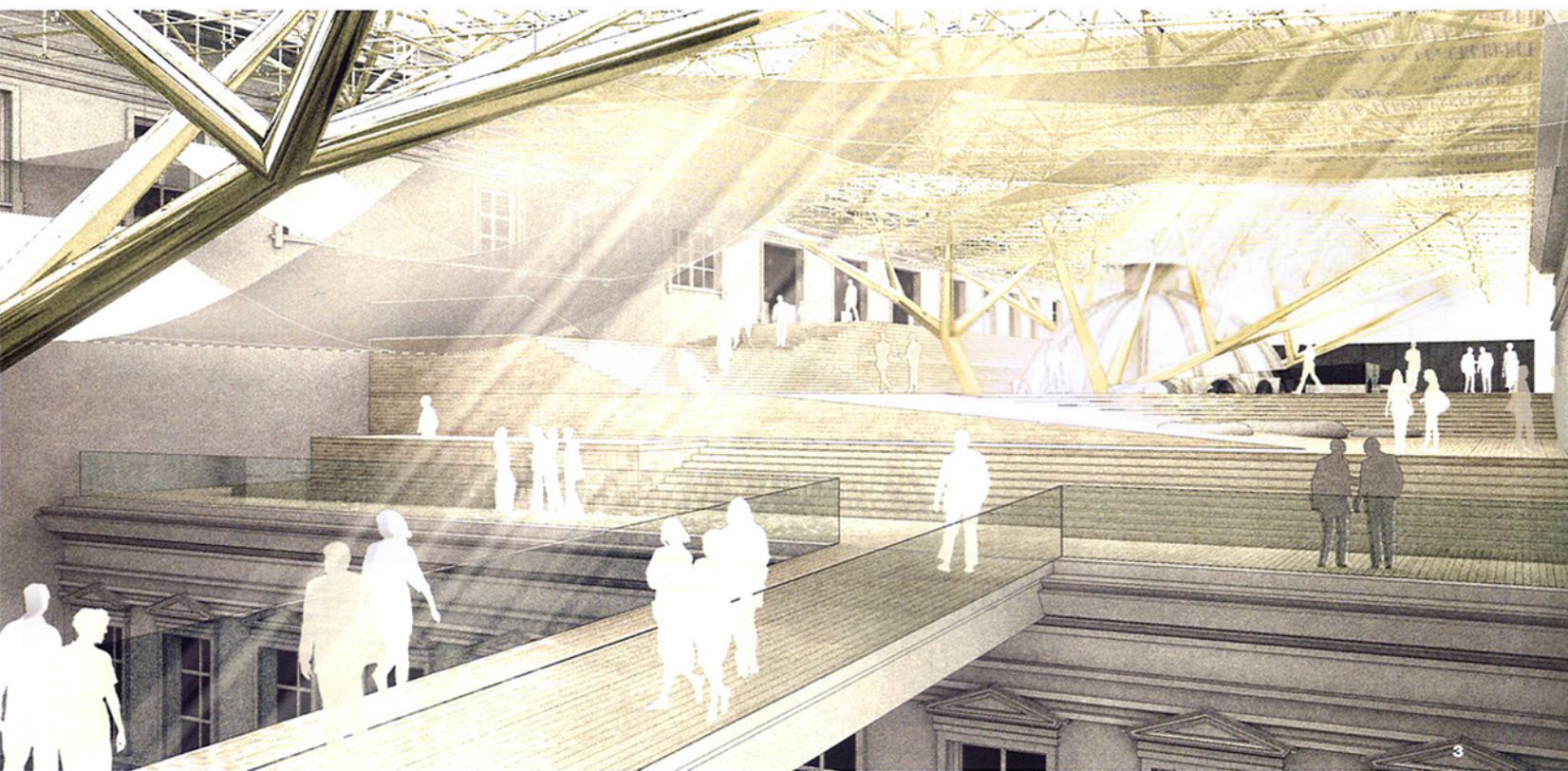
The National Art Gallery seeks to be a civic and creative space, established for the enrichment, enjoyment, and engagement of Singaporeans and international visitors. With a Southeast Asian focus, the National Art Gallery aims to be accessible to its visitors and users in physical, intellectual, cultural, social and virtual terms. In addition, it will also help connect people to a rich sense of history when it opens its doors as the Gallery will take the premises of the City Hall and former Supreme Court buildings—both gazetted as national monuments in 1992. The buildings will undergo conservation and adaptive reuse to be transformed into the National Art Gallery. At 48,000 square metres, it will be the largest visual arts venue in Singapore.

THE DESIGN

A two-stage architectural design competition was launched in February 2007 to seek design ideas from around the world. An international jury shortlisted five entries for the second stage, and from these three teams were selected as winners of this competition. After a rigorous process of jury deliberation and consideration of public views, Studio Milou Architecture from France, in partnership with Singapore’s CPG Consultants Pte Ltd, were commissioned to design and build the National Art Gallery.

1 View from the Padang
2 Lobby

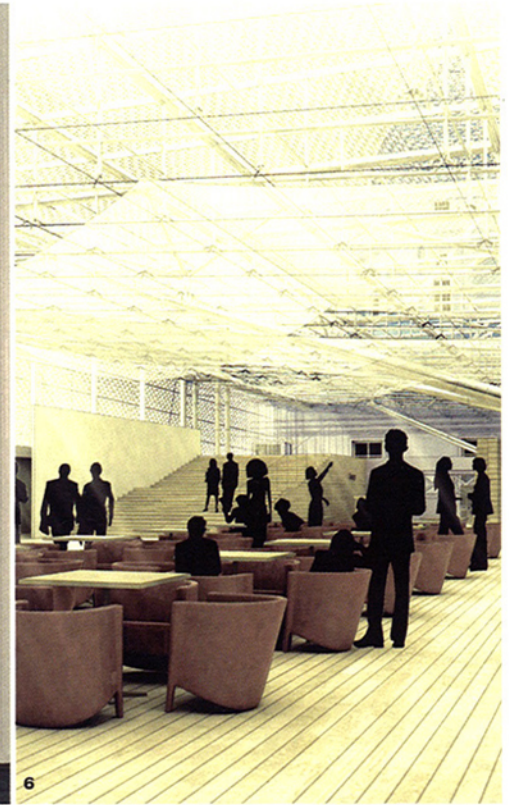




PROJECTS



5



6

The proposed design integrates the City Hall and former Supreme Court buildings by creating a unique blend between the old and the new, while respecting the original architecture of these two monuments. A new basement level is created, connecting the two buildings seamlessly, providing a secure and environmentally controlled delivery and processing area for artworks, as well as a large concourse area for visitor services. Connecting bridges between the buildings at other levels allow visitors to move easily between the buildings and flow of back-of-house services.

THE GALLERIES

With approximately 12,000 square metres of gallery space, the National Art Gallery will house a range of permanent and temporary galleries, showcasing works from both our national collection and international travelling exhibitions. The main floors will feature a permanent collection of Singapore and Southeast Asian works in dedicated galleries.

A special set of Research Galleries will complement these core galleries, providing space for curators and researchers to experiment with new and creative ways to present materials, and to encourage greater dialogue between the national collection and those of other regional institutions.

Almost 6,000 square metres of changing gallery space is also available to provide opportunities to host and jointly curate travelling exhibitions. Planned with the flexibility for large volume and small intimate spaces, these changing galleries will provide world-class standards and facilitate the display of artworks and objects of different sizes.

ROOFTOP PLAZA

A distinctive metal and glass canopy, supported by tree-like columns, integrates the buildings at roof level, creating a civic plaza in the sky. Bathed in unfiltered, natural light, the rooftop plaza will be a venue for performances, exhibitions, talks, events and eateries. Visitors can walk through displays of some of the largest pieces of modern art, while enjoying the city view.

PROGRAMMES

The National Art Gallery aims to be an integral part of the recreational lifestyle of the locals and tourists alike. By day, the Gallery will offer learning

and education opportunities through exhibition displays, artist talks, children's programmes and related activities. By night, the Gallery will become a stylish after-dark venue for events, film screenings and concerts. The National Art Gallery will house a 300-seat auditorium, a 200-seat white box performance venue, and numerous function rooms and spaces for different kinds of events.

CHILDREN'S MUSEUM

There will be a children's museum to provide fun, multi-sensory learning experiences for children. There will be children-centred spaces such as a playground; wet/dry activity workshops; interactive media rooms; and learning areas for older students.

PROJECT DATA

Project Name
The National Art Gallery, Singapore
Location
Singapore's City Hall and former Supreme Court buildings
Status
Final design development phase
Expected Completion
Soft opening in end 2013
Client
The National Art Gallery, Singapore
Owner
Singapore Government/MICA
Architecture Firms
Studio Milou Singapore, in partnership with CPG Consultants
Principal Architect
Jean Francois Milou
Main Contractor
NA
Mechanical & Electrical Engineer
CPG Consultants
Civil & Structural Engineer
CPG Consultants
Images/Photos
The National Art Gallery, Singapore

3 Skybridge 4 & 5 Gallery
6 Interior perspective